

# Différentes classes d'ICI

## Physeter catodon

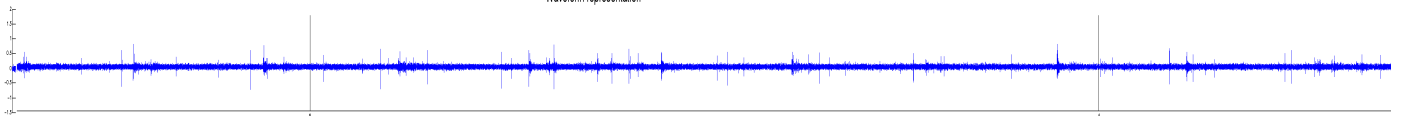
ICI (0.10000000000000001, 0.29000000000000004)

[http://sabiiod.univ-tln.fr/public\\_data/ANTARES\\_V3\\_21/Antares\\_067550.21/ANTARES\\_67550.21\\_27\\_10\\_2012\\_00.56.26\\_03.57.14\\_T8\\_Q20\\_J60\\_part1\\_windowsnb40.png](http://sabiiod.univ-tln.fr/public_data/ANTARES_V3_21/Antares_067550.21/ANTARES_67550.21_27_10_2012_00.56.26_03.57.14_T8_Q20_J60_part1_windowsnb40.png)

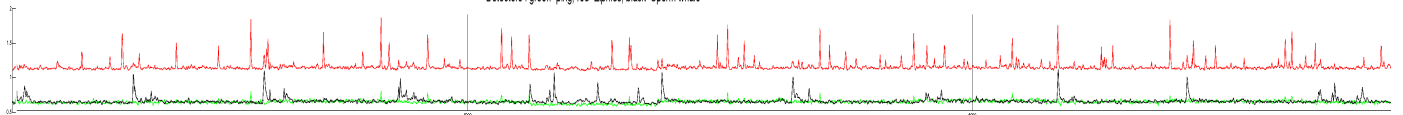
plusieurs cachalots ? Échos ?

BALESTRIERO R. & GLOTIN H. SABIOD.ORG - MI CNRS - Univ. Toulon Scalogram representation on bioacoustic data [ScatNet] using a Gabor mother wavelet. Antares DATASET (27\_10\_2012) : 3\_21Antares\_067550.21 Start at : 1

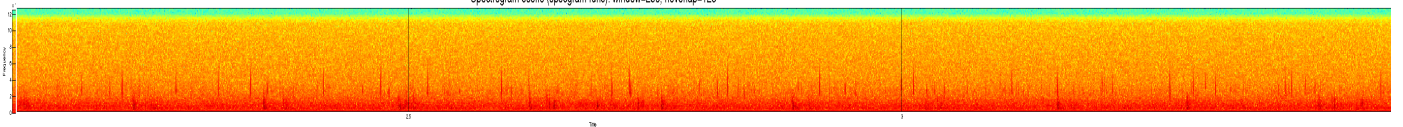
Waveform representation



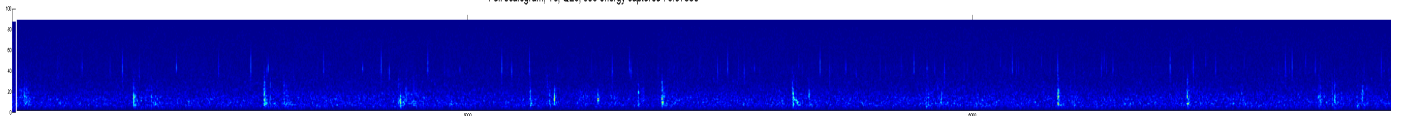
Detectors : green=ping, red=Zphius, black=Sperm whale



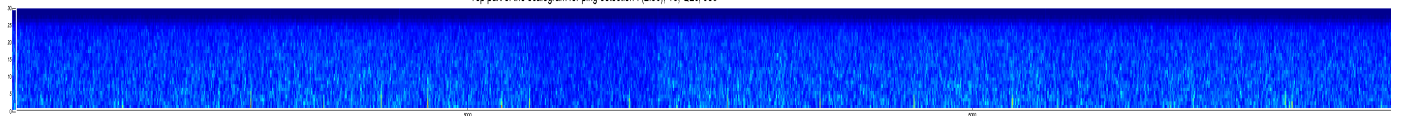
Spectrogram coeffs (spectgram func): window=256, noverlap=128



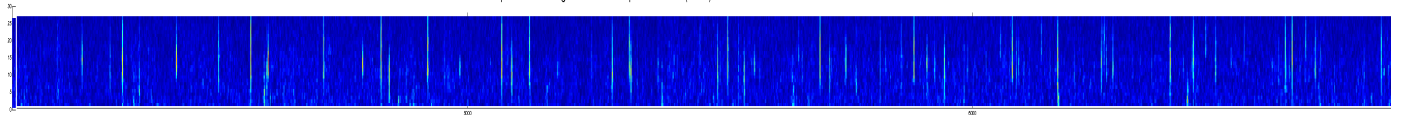
Full scalogram, T8, Q20, J60 energy captured : 0.87336



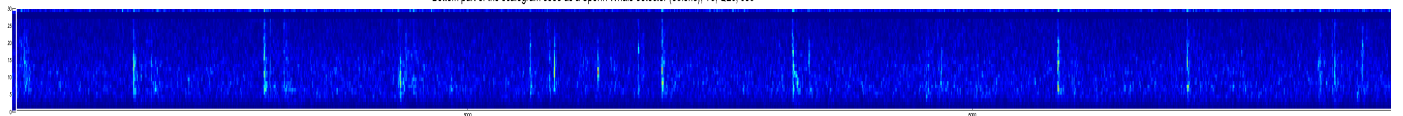
Top part of the scalogram for ping detection : (2:30), T8, Q20, J60



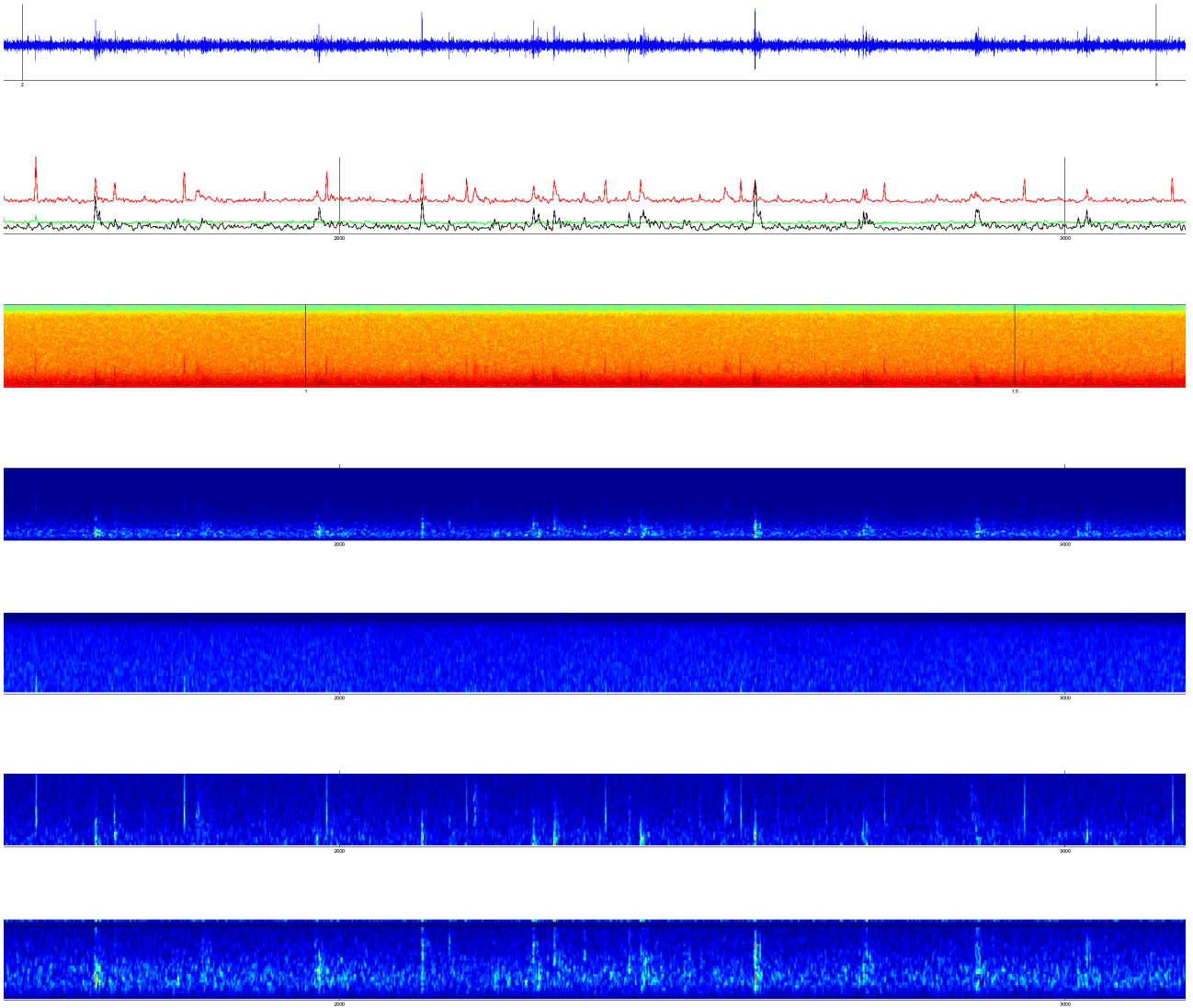
Middle part of the scalogram used as a Zphius detector (35:60)



Bottom part of the scalogram used as a Sperm Whale detector (60:end), T8, Q20, J60



[http://sabiody.univ-tln.fr/public\\_data/ANTARES\\_V3\\_21/Antares\\_067211.21/ANTARES\\_67211.21\\_10\\_10\\_2012\\_03.43.29\\_06.44.21\\_T8\\_Q20\\_J60\\_part1\\_windowsnb40.png](http://sabiody.univ-tln.fr/public_data/ANTARES_V3_21/Antares_067211.21/ANTARES_67211.21_10_10_2012_03.43.29_06.44.21_T8_Q20_J60_part1_windowsnb40.png)

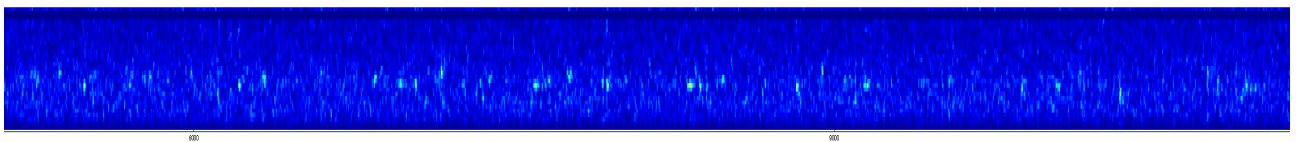
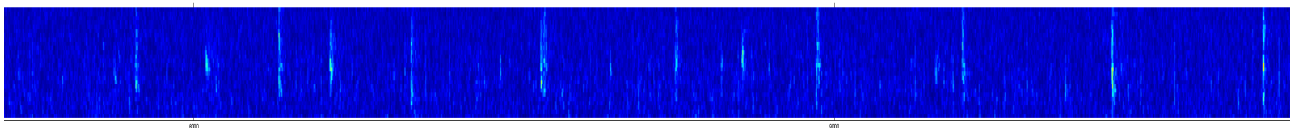
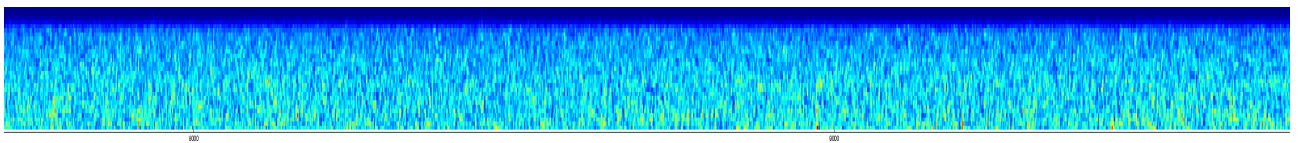
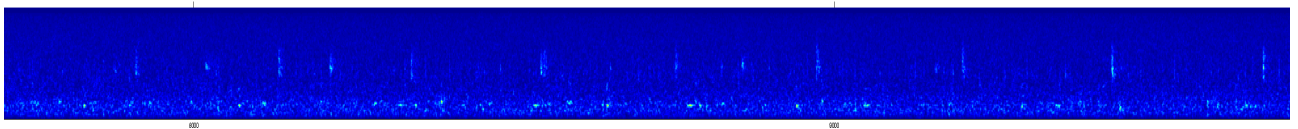
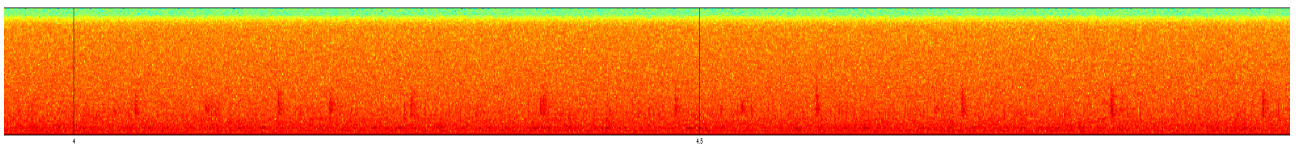
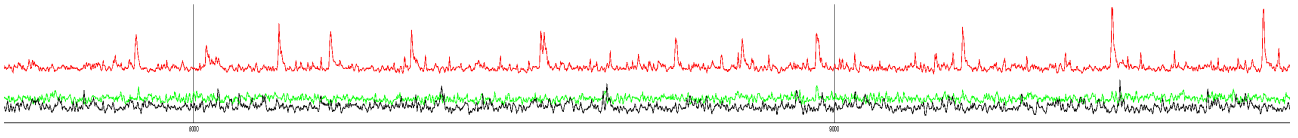
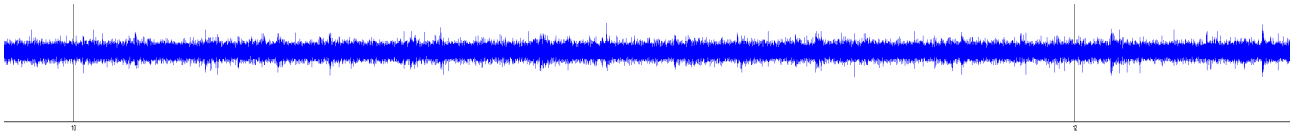


ICI (0.29000000000000004, 0.48000000000000009)

[http://sabiody.univ-tln.fr/public\\_data/ANTARES\\_V3\\_21/Antares\\_066567.21/ANTARES\\_66567.21\\_08\\_09\\_2012\\_02.24.47\\_05.25.35\\_T8\\_Q20\\_J60\\_part1\\_windowsnb40.png](http://sabiody.univ-tln.fr/public_data/ANTARES_V3_21/Antares_066567.21/ANTARES_66567.21_08_09_2012_02.24.47_05.25.35_T8_Q20_J60_part1_windowsnb40.png)

chasse?(rapprochés et biens réguliers)

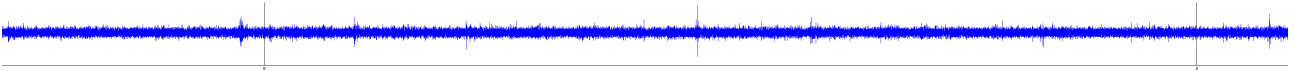




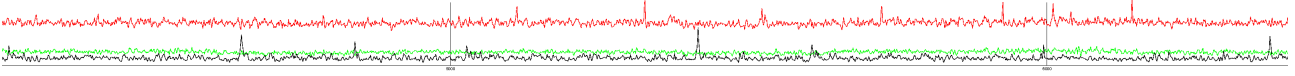
[http://sabiody.univ-tln.fr/public\\_data/ANTARES\\_V3\\_21/Antares\\_066521.21/ANTARES\\_66521.21\\_05\\_09\\_2012\\_09.27.10\\_12.27.57\\_T8\\_Q20\\_J60\\_part1\\_windowsnb40.png](http://sabiody.univ-tln.fr/public_data/ANTARES_V3_21/Antares_066521.21/ANTARES_66521.21_05_09_2012_09.27.10_12.27.57_T8_Q20_J60_part1_windowsnb40.png)

beaucoup de bruit...

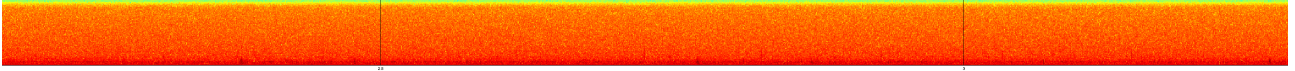
Waveform representation



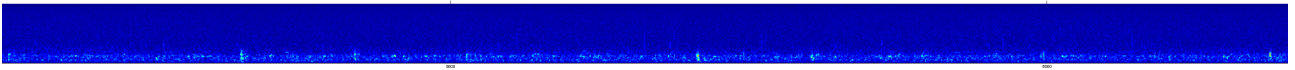
Detectors : green=ping, red=Ziphius, black=Sperm whale



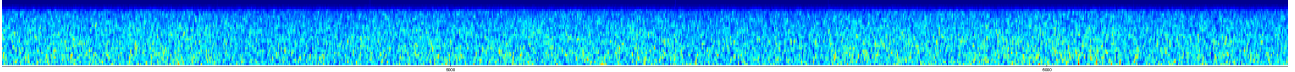
Spectrogram coeffs (specgram func), window=256, noverlap=128



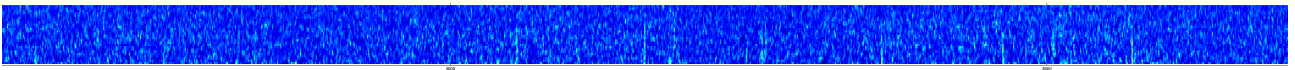
Full scalogram, T8, Q20, J60 energy captured : 0.91066



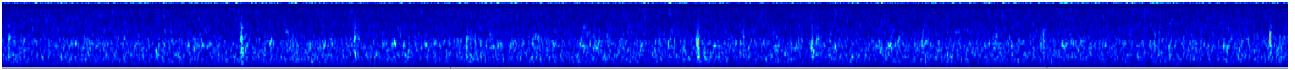
Top part of the scalogram for ping detection : (2:30), T8, Q20, J60



Middle part of the scalogram used as a Ziphius detector (35:60)

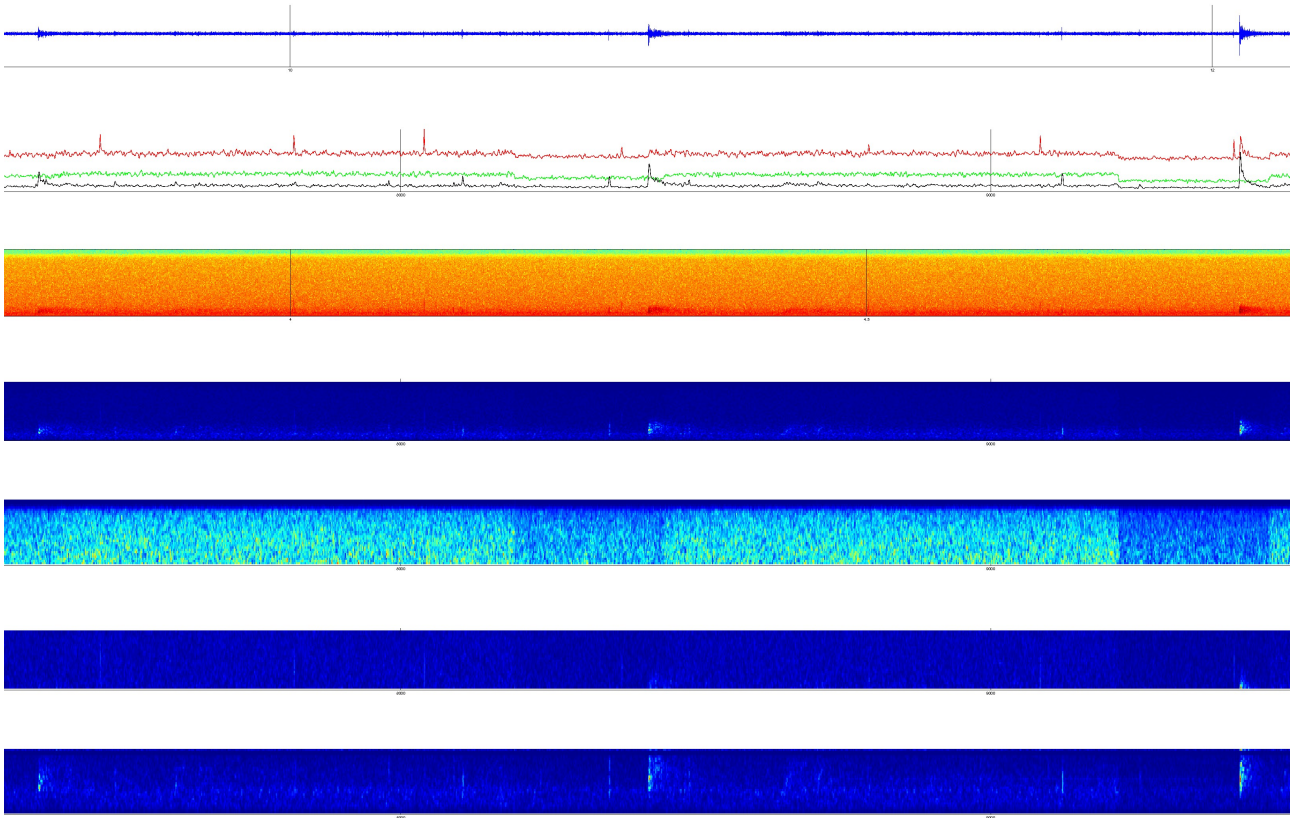


Bottom part of the scalogram used as a Sperm Whale detector (60:end), T8, Q20, J60



ICI (0.48000000000000009, 0.67000000000000004)

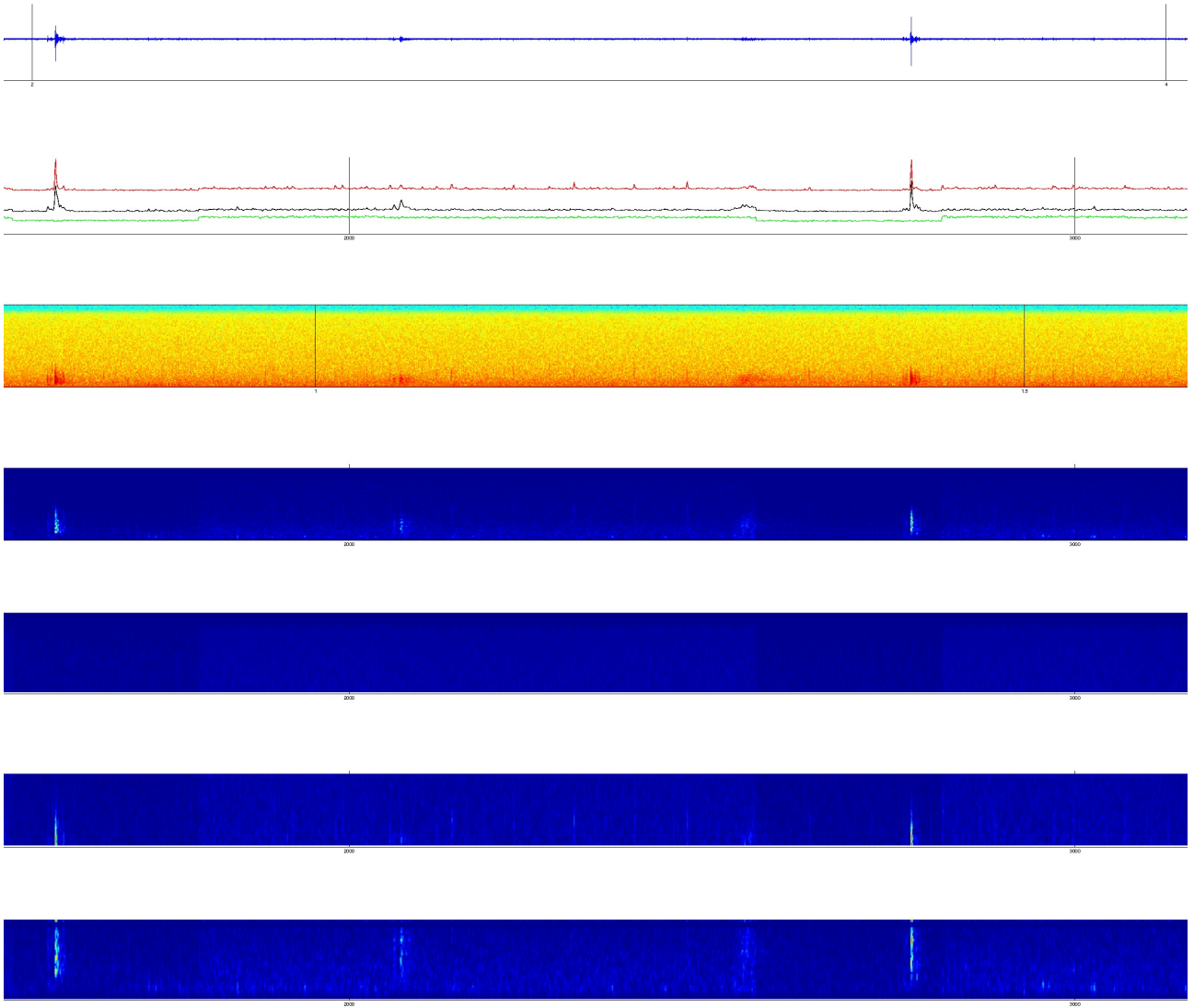
[http://sabiod.univ-tln.fr/public\\_data/ANTARES\\_V3\\_21/Antares\\_066527.21/ANTARES\\_66527.21\\_05\\_09\\_2012\\_18.24.47\\_21.25.34\\_T8\\_Q20\\_J60\\_part1\\_windowsnb40.png](http://sabiod.univ-tln.fr/public_data/ANTARES_V3_21/Antares_066527.21/ANTARES_66527.21_05_09_2012_18.24.47_21.25.34_T8_Q20_J60_part1_windowsnb40.png)



[http://sabiody.univ-tln.fr/public\\_data/ANTARES\\_V3\\_21/Antares\\_066865.21/ANTARES\\_66865.21\\_24\\_09\\_2012\\_01.14.59\\_04.15.45\\_T8\\_Q20\\_J60\\_part2\\_windowsnb40.png](http://sabiody.univ-tln.fr/public_data/ANTARES_V3_21/Antares_066865.21/ANTARES_66865.21_24_09_2012_01.14.59_04.15.45_T8_Q20_J60_part2_windowsnb40.png)

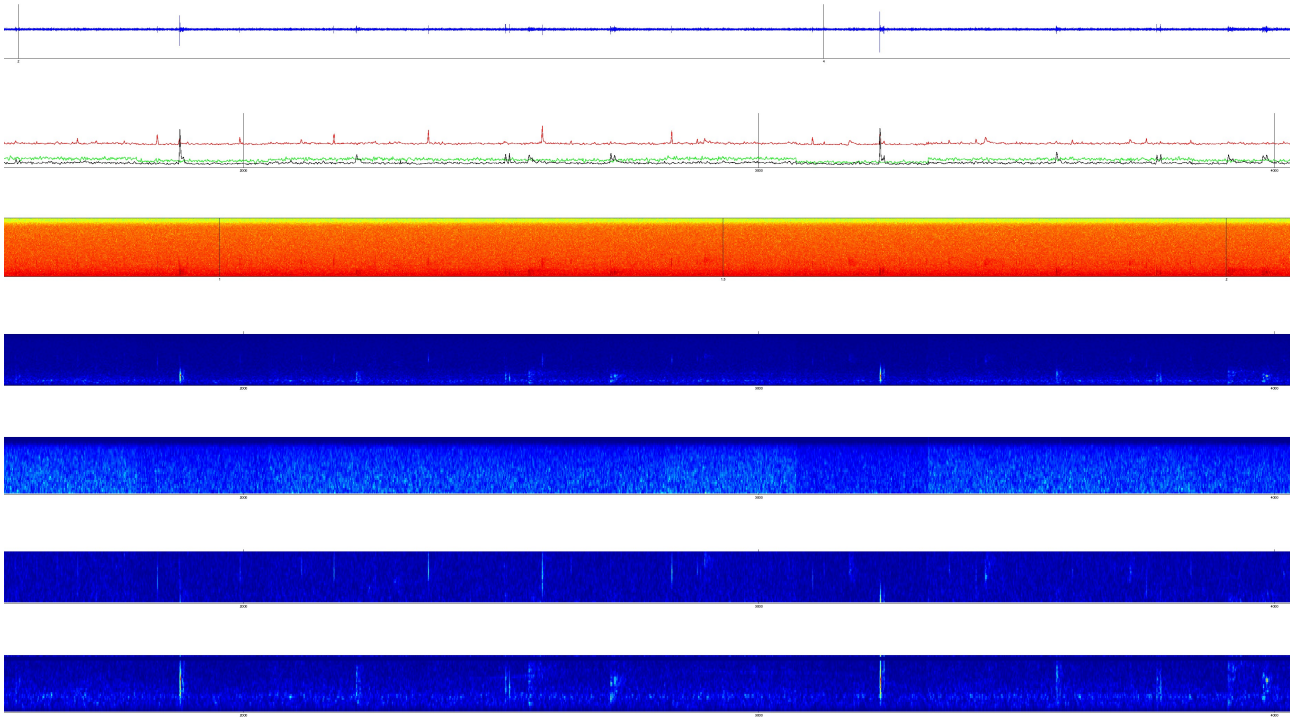




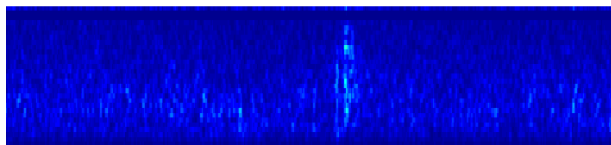
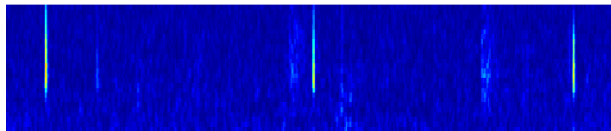
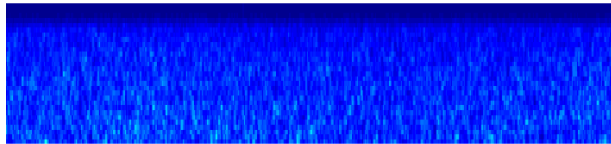
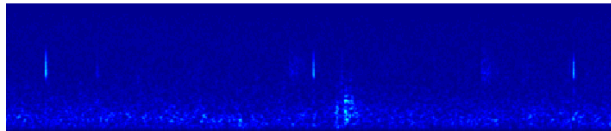
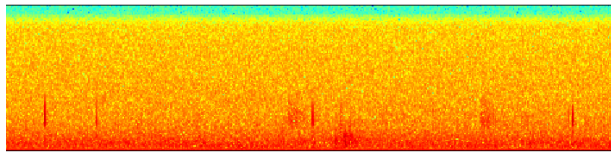
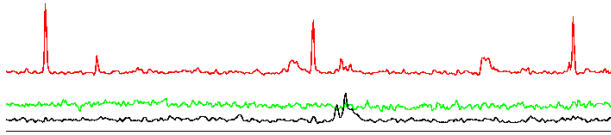


ICI (0.6700000000000004, 0.8600000000000001)

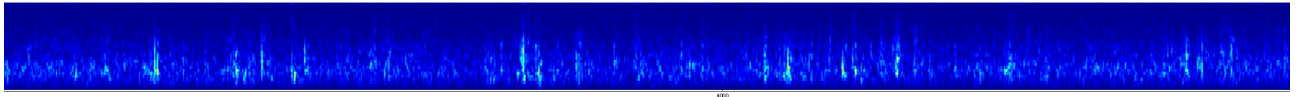
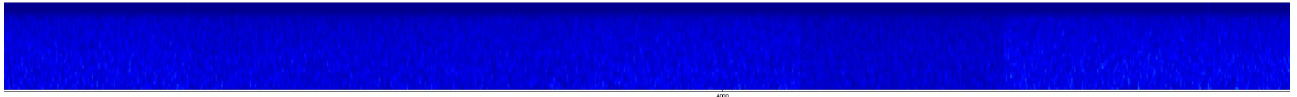
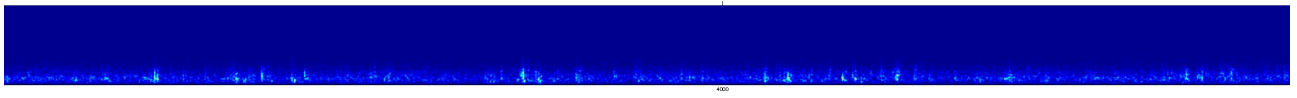
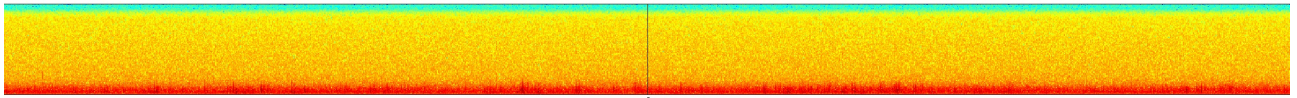
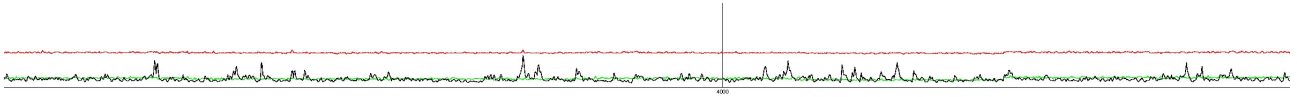
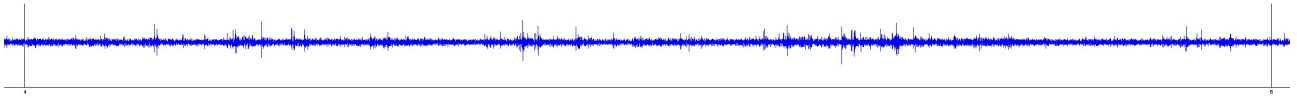
[http://sabiody.univ-tln.fr/public\\_data/ANTARES\\_V3\\_21/Antares\\_067240.21/ANTARES\\_67240.21\\_1\\_10\\_2012\\_15.59.26\\_18.59.38\\_T8\\_Q20\\_J60\\_part6\\_windowsnb40.png](http://sabiody.univ-tln.fr/public_data/ANTARES_V3_21/Antares_067240.21/ANTARES_67240.21_1_10_2012_15.59.26_18.59.38_T8_Q20_J60_part6_windowsnb40.png)



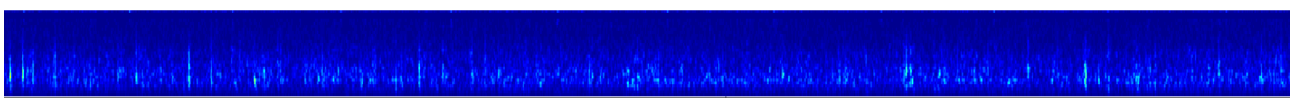
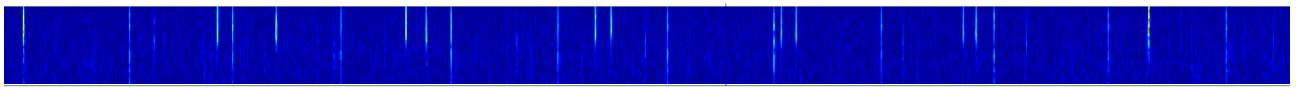
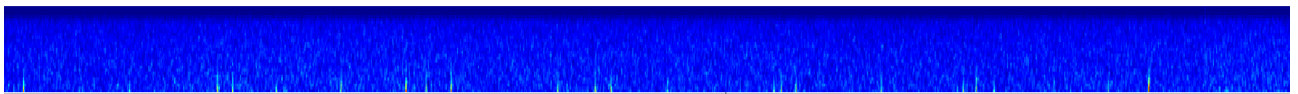
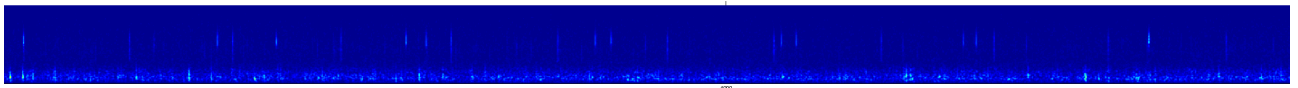
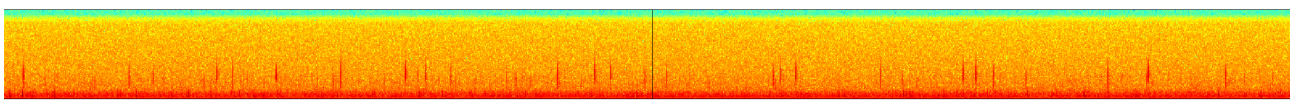
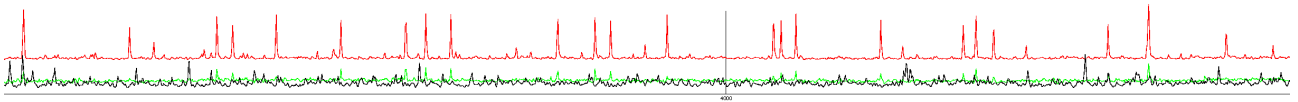
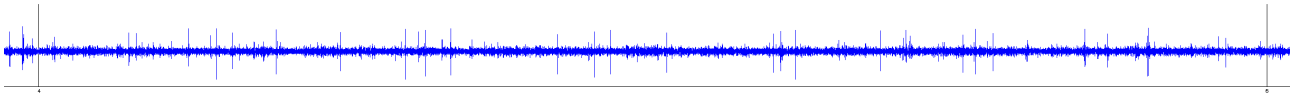
[http://sabiody.univ-tln.fr/public\\_data/ANTARES\\_V3\\_21/Antares\\_067546.21/ANTARES\\_67546.21\\_26\\_10\\_2012\\_20.17.46\\_23.18.34\\_T8\\_Q20\\_J60\\_part2\\_windowsnb40.png](http://sabiody.univ-tln.fr/public_data/ANTARES_V3_21/Antares_067546.21/ANTARES_67546.21_26_10_2012_20.17.46_23.18.34_T8_Q20_J60_part2_windowsnb40.png)



[6\\_10\\_2012\\_20.17.46\\_23.18.34\\_T8\\_Q20\\_J60\\_part4\\_windowsnb40.png](#)  
(déjà vu avant, en + rapide)



[http://sabiiod.univ-tln.fr/public\\_data/ANTARES\\_V3\\_21/Antares\\_067479.21/ANTARES\\_67479.21\\_23\\_10\\_2012\\_01.45.00\\_04.45.46\\_T8\\_Q20\\_J60\\_part3\\_windowsnb40.png](http://sabiiod.univ-tln.fr/public_data/ANTARES_V3_21/Antares_067479.21/ANTARES_67479.21_23_10_2012_01.45.00_04.45.46_T8_Q20_J60_part3_windowsnb40.png)



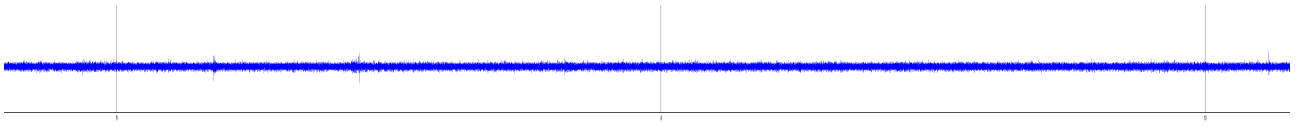
ICI (1.0500000000000003, 1.2400000000000002)

[http://sabiiod.univ-tln.fr/public\\_data/ANTARES\\_V3\\_21/Antares\\_066507.21/ANTARES\\_66507.21\\_0](http://sabiiod.univ-tln.fr/public_data/ANTARES_V3_21/Antares_066507.21/ANTARES_66507.21_0)

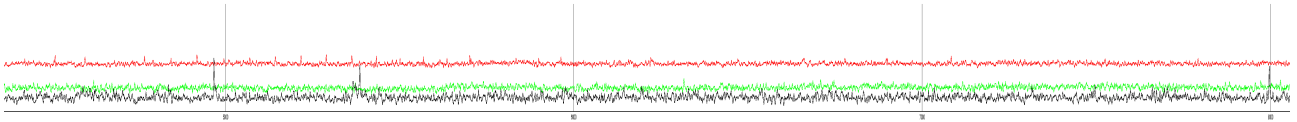
# 4\_09\_2012\_14.25.25\_17.26.11\_T8\_Q20\_J60\_part1\_windowsnb40.png

BALISTRERO R. & GLOTIN H. SABIDO ORG - IM CNRS - Univ. Toulon Scalogram representation on bioacoustic data (ScarNet) using a Gabor mother wavelet. Antares DATASET (4\_09\_2012\_3\_21) Antares\_06630729 Start at: 1

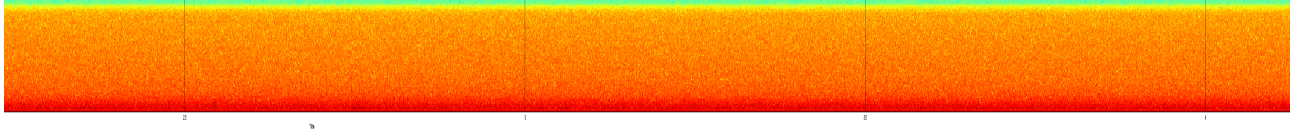
Waveform representation



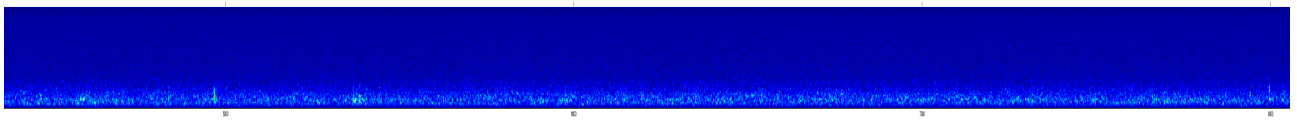
Detectors: green=ping, red=Ziphius, black=Sperm whale



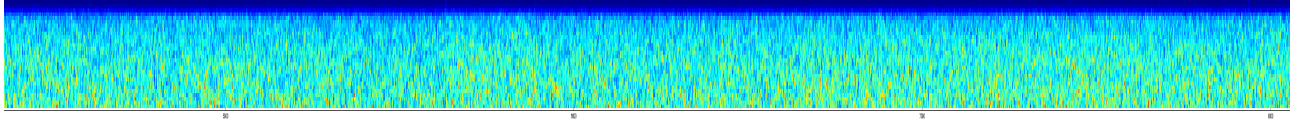
Spectrogram coeffs (spectrum func): window=600, noverlap=120



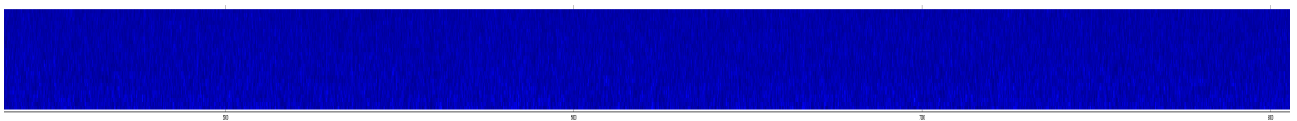
Full scalogram T8, Q20, J60 energy captured: 0.69724



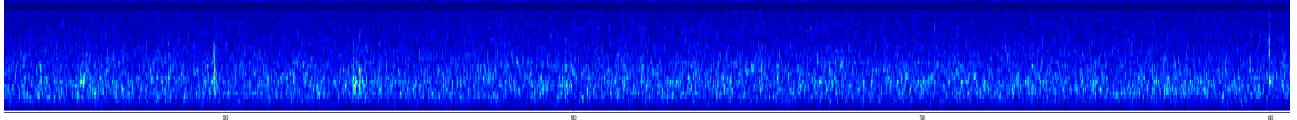
Top part of the scalogram for ping detection (2-30), T8, Q20, J60



Middle part of the scalogram used as a Ziphius detector (35-50)



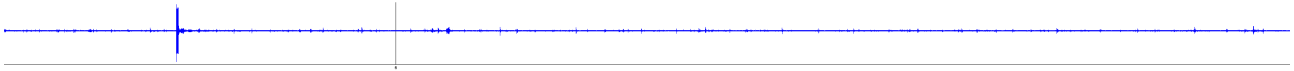
Bottom part of the scalogram used as a Sperm Whale detector (50 and), T8, Q20, J60



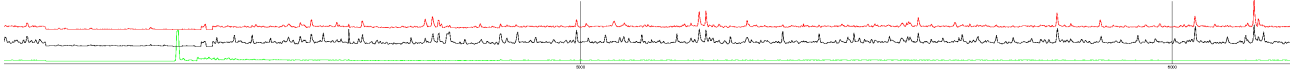
[http://sabiiod.univ-tln.fr/public\\_data/ANTARESV3\\_21/Antares\\_066525.21/ANTARES\\_66525.21\\_05\\_09\\_2012\\_15.23.39\\_18.24.26\\_T8\\_Q20\\_J60\\_part1\\_windowsnb40.png](http://sabiiod.univ-tln.fr/public_data/ANTARESV3_21/Antares_066525.21/ANTARES_66525.21_05_09_2012_15.23.39_18.24.26_T8_Q20_J60_part1_windowsnb40.png)



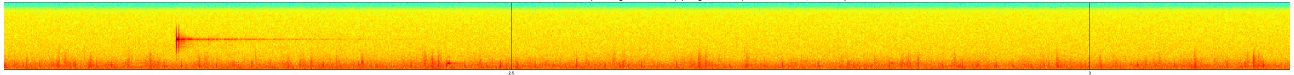
Waveform representation



Detectors : green=ping, red=Zphius, black=Sperm whale



Spectrogram coeffs (spectram func): window=256, noverlap=128



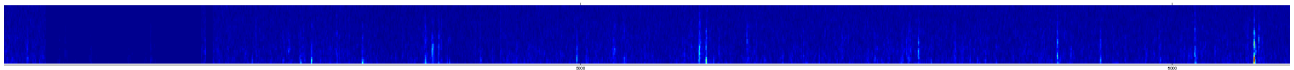
Full scalogram, T8, Q20, J60 energy captured : 0.86773



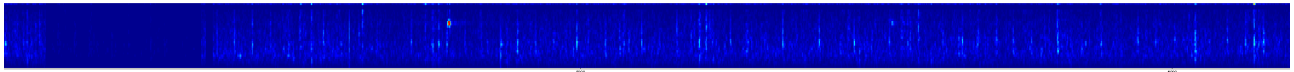
Top part of the scalogram for ping detection : (2:30), T8, Q20, J60



Middle part of the scalogram used as a Zphius detector (35:60)



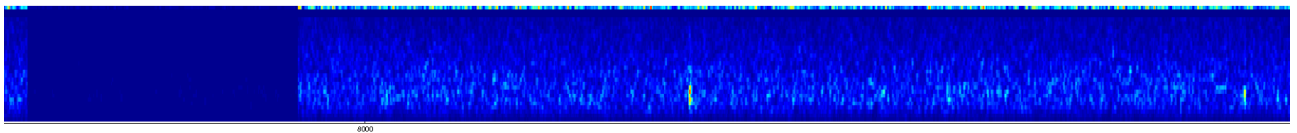
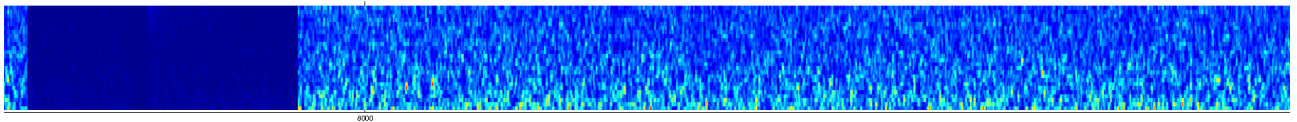
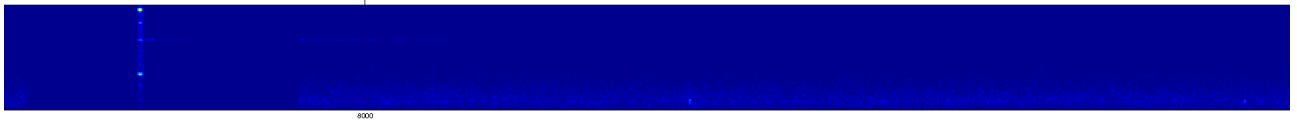
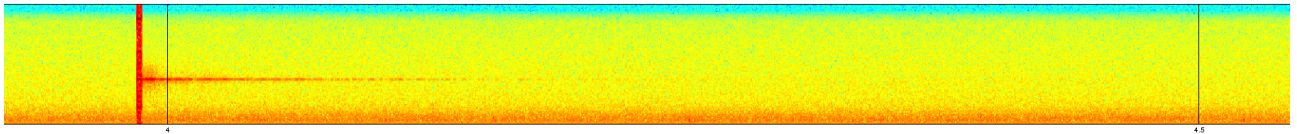
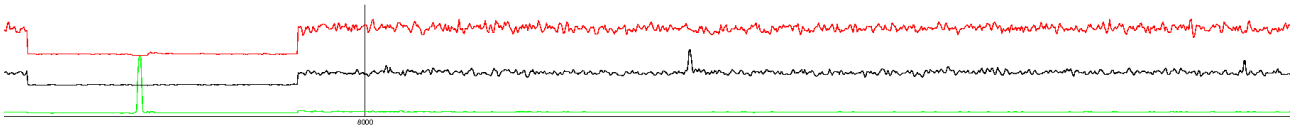
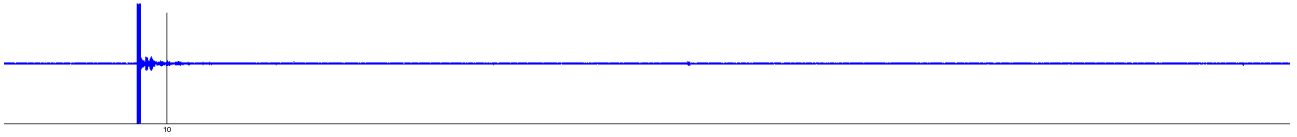
Bottom part of the scalogram used as a Sperm Whale detector (60:end), T8, Q20, J60



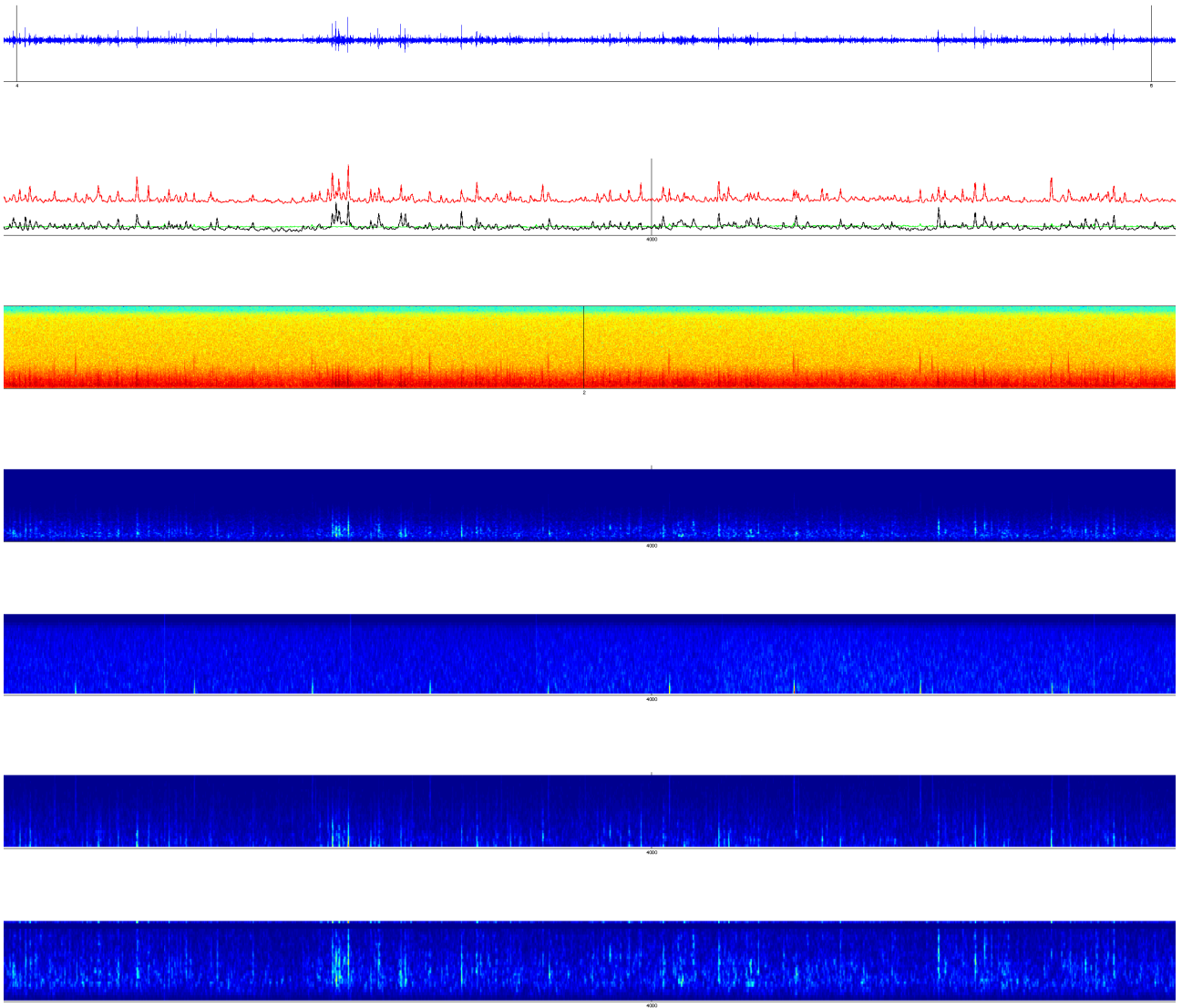
ICI (1.2400000000000002, 1.4300000000000004)

[http://sabiod.univ-tln.fr/public\\_data/ANTARES\\_V3\\_21/Antares\\_066856.21/ANTARES\\_66856.21\\_2\\_3\\_09\\_2012\\_13.09.19\\_16.10.06\\_T8\\_Q20\\_J60\\_part4\\_windowsnb40.png](http://sabiod.univ-tln.fr/public_data/ANTARES_V3_21/Antares_066856.21/ANTARES_66856.21_2_3_09_2012_13.09.19_16.10.06_T8_Q20_J60_part4_windowsnb40.png)

que du ping...



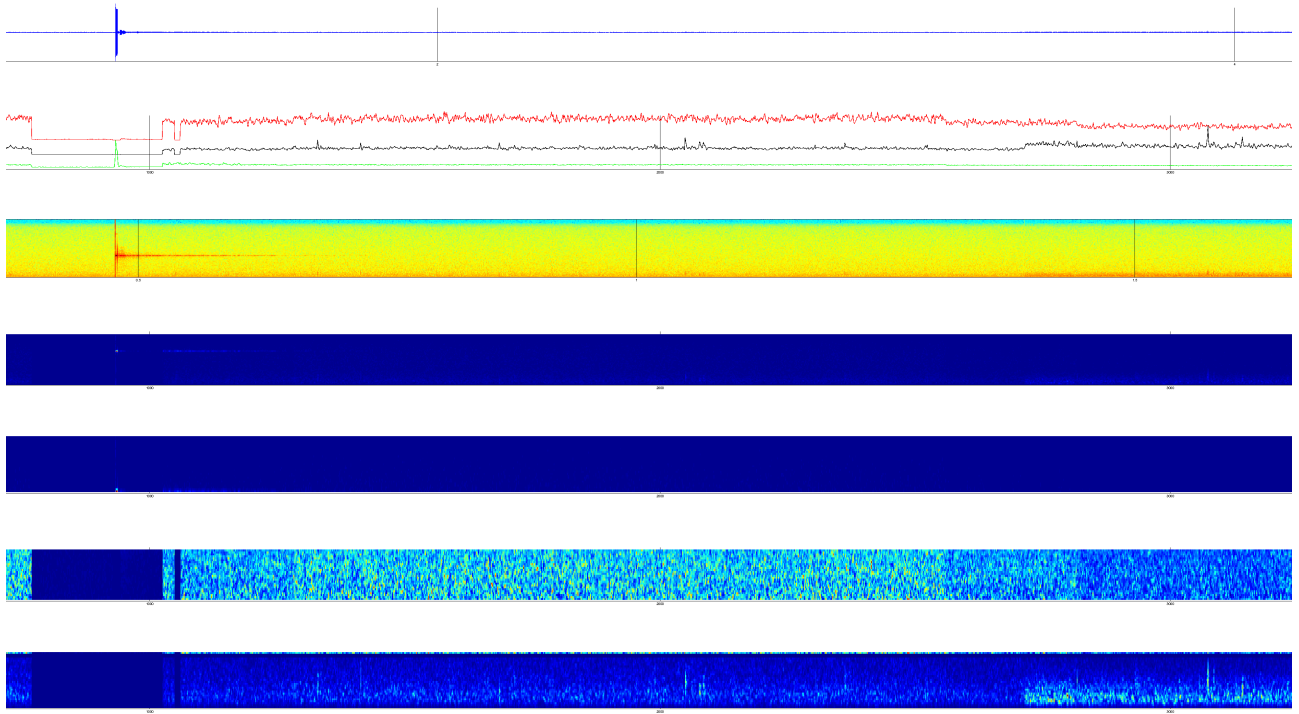
[http://sabiody.univ-tln.fr/public\\_data/ANTARES\\_V3\\_21/Antares\\_067476.21/ANTARES\\_67476.21\\_2\\_2\\_10\\_2012\\_22.43.51\\_01.44.38\\_T8\\_Q20\\_J60\\_part1\\_windowsnb40.png](http://sabiody.univ-tln.fr/public_data/ANTARES_V3_21/Antares_067476.21/ANTARES_67476.21_2_2_10_2012_22.43.51_01.44.38_T8_Q20_J60_part1_windowsnb40.png)



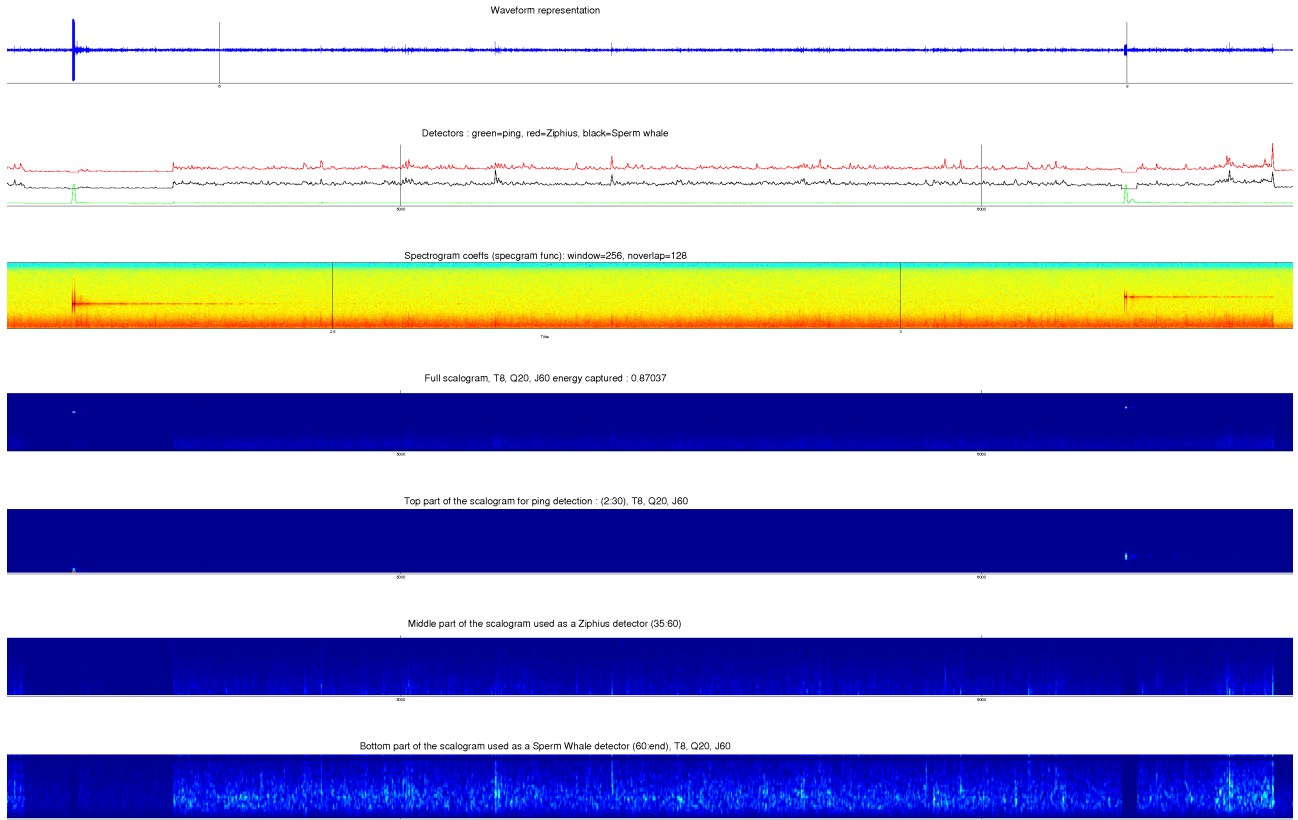
ICI (1.4300000000000004, 1.6200000000000003) : classe non présente

ICI (1.6200000000000003, 1.8100000000000003)

[http://sabiiod.univ-tln.fr/public\\_data/ANTARES\\_V3\\_21/Antares\\_066523.21/ANTARES\\_66523.21\\_05\\_09\\_2012\\_12.28.18\\_15.22.40\\_T8\\_Q20\\_J60\\_part4\\_windowsnb40.png](http://sabiiod.univ-tln.fr/public_data/ANTARES_V3_21/Antares_066523.21/ANTARES_66523.21_05_09_2012_12.28.18_15.22.40_T8_Q20_J60_part4_windowsnb40.png)



[http://sabiiod.univ-tln.fr/public\\_data/ANTARES\\_V3\\_21/Antares\\_066627.21/ANTARES\\_66627.21\\_1\\_1\\_09\\_2012\\_04.18.32\\_06.57.53\\_T8\\_Q20\\_J60\\_part2\\_windowsnb40.png](http://sabiiod.univ-tln.fr/public_data/ANTARES_V3_21/Antares_066627.21/ANTARES_66627.21_1_1_09_2012_04.18.32_06.57.53_T8_Q20_J60_part2_windowsnb40.png)

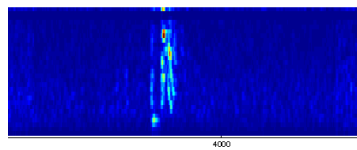
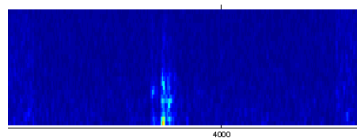
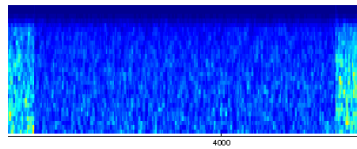
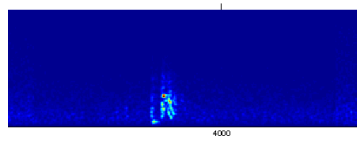
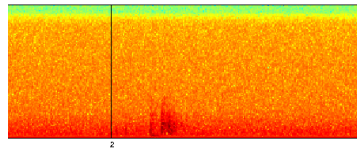
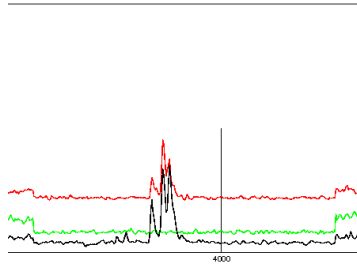


ICI (1.8100000000000003, 2.0000000000000004) : rien

et ICI très faibles : < 0,001

[http://sabiiod.univ-tln.fr/public\\_data/ANTARESV3\\_21/Antares\\_067541.21/ANTARES\\_67541.21\\_2](http://sabiiod.univ-tln.fr/public_data/ANTARESV3_21/Antares_067541.21/ANTARES_67541.21_2)

[6\\_10\\_2012\\_14.15.29\\_17.16.16\\_T8\\_Q20\\_J60\\_part4\\_windowsnb40.png](#)  
changement de gain du micro, mais cachalots quand même ?



[http://sabiod.univ-tln.fr/public\\_data/ANTARES\\_V3\\_21/Antares\\_067629.21/ANTARES\\_67629.21\\_3\\_1\\_10\\_2012\\_00.20.46\\_03.21.33\\_T8\\_Q20\\_J60\\_part1\\_windowsnb40.png](http://sabiod.univ-tln.fr/public_data/ANTARES_V3_21/Antares_067629.21/ANTARES_67629.21_3_1_10_2012_00.20.46_03.21.33_T8_Q20_J60_part1_windowsnb40.png)  
PING

